



DECA VIBRATOR

Division of DECA Products, Inc.

STAINLESS STEEL PNEUMATIC TURBINE VIBRATORS

Models TV-25SS • TV-16SS • TV-10SS



Description

The TV Stainless Steel Pneumatic Turbine Vibrator is comprised of a body section, one end plate having a right hand thread, and a detachable foot. Vibration is produced by the centrifugal force of the positive and negative unbalanced moments in the rotor. The rotor is supported on two heavy duty pre-lubricated matched sealed bearings. A special high performance grease ensures a long working life. The inner and outer raceways of the bearings are designed so that the bearings can easily be removed without using special tools.

Maximum temperature 120°C = 250°F.

Noise level range 60 to 75 dB.

Application

The TV SS range of turbine vibrators are suitable for use in the Food and Pharmaceutical industries and in hazardous areas where contact with non-ferrous materials, paint, or exhaust contaminated oil is not acceptable. No lubrication is required, but clean filtered air is essential.

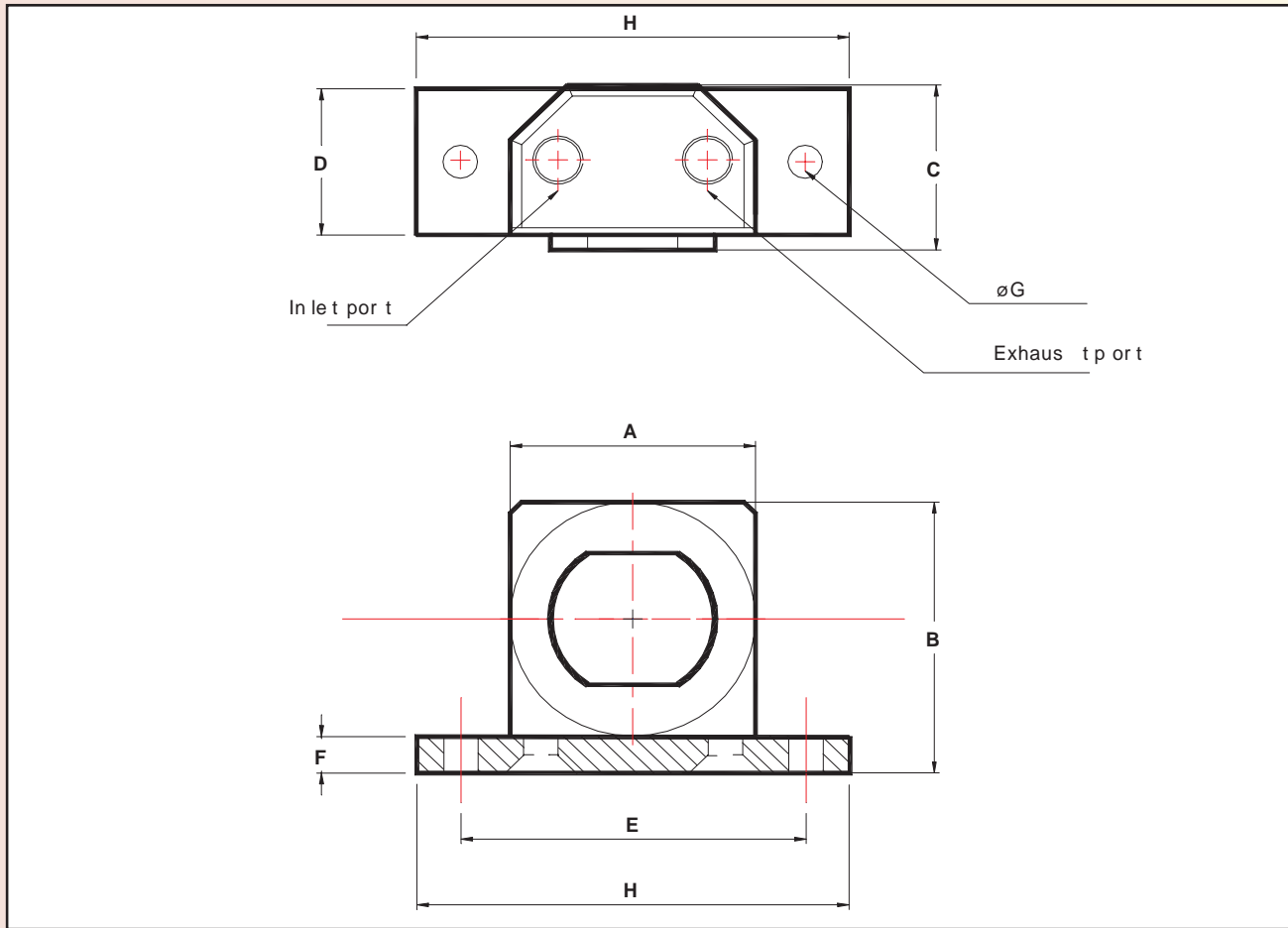
These vibrators are extremely quiet, thus helping to conform with noise regulations.

On request can be supplied with ATEX certification
to ATEX 95 94/9/EC  II 2 G & D Zone 1, 2, 21, 22

Vibration Technology

STAINLESS STEEL TV TURBINE VIBRATORS

Models TV-25SS • TV-16SS • TV-10SS



TECHNICAL DATA

Model	2 BAR - 30 PSI						4 BAR - 60 PSI						6 BAR - 90 PSI					
	VPM	Centrifugal Force			Air consumption		VPM	Centrifugal Force			Air consumption		VPM	Centrifugal Force			Air consumption	
	N	Kg	Lb	L/min	Cfm		N	Kg	Lb	L/min	Cfm		N	Kg	Lb	L/min	Cfm	
TV-10SS	27500	583	59	131	46	1.6	35000	946	96	213	80	2.8	37500	1086	111	244	112	3.9
TV-16SS	17000	1103	112	248	120	4.2	21500	1764	180	397	200	7.0	24000	2198	224	494	290	10.2
TV-25SS	12000	1784	182	401	185	6.5	15500	2977	304	669	325	11.4	17000	3581	365	805	455	16.0

OVERALL DIMENSIONS

Model	A		B		C		D		E		F		ϕG		H		Inlet Port BSP	Exhaust Port BSP	Weight	
	mm	in	mm	in	mm	in	mm	in	mm	in	mm	in	mm	in	mm	in			Kg	Lbs
TV-10SS	49	1.93	55	2.17	38.1	1.50	30	1.18	68	2.68	6	0.24	7	0.28	86	3.39	1/8"	1/8"	0.625	1
TV-16SS	64	2.52	74	2.91	45.5	1.79	40	1.57	90	3.54	10	0.39	9	0.35	113	4.45	1/4"	1/4"	1.307	3
TV-25SS	78	3.07	88	3.46	55.5	2.19	50	1.97	104	4.09	10	0.39	11	0.43	128	5.04	1/4"	1/4"	2.284	5

Data obtained on a heavy laboratory test block. Frequency and force will decrease on a less rigid mount.



DECA
VIBRATOR
Division of DECA Products, Inc.