



# DECA VIBRATOR

Division of DECA Products, Inc.

## PNEUMATIC LINEAR VIBRATORS

Model PLV




### Description

PLV Linear Piston Vibrators are air cushioned for applications where noise can be a problem. These quiet vibrators have a low frequency, high amplitude and are controllable by regulation of the air pressure. A 3/2 pneumatic valve must be used to ensure consistent starting and reliable operation.

### Application:

The PLV range of heavy duty linear vibrators have the powerful force necessary to move materials in bins and hoppers. This high output force is also suitable for powering large feeders and compaction tables with high loading.

On request can be supplied with ATEX certification  
to ATEX 95 94/9/EC  II 2 G & D Zone 1, 2, 21, 22

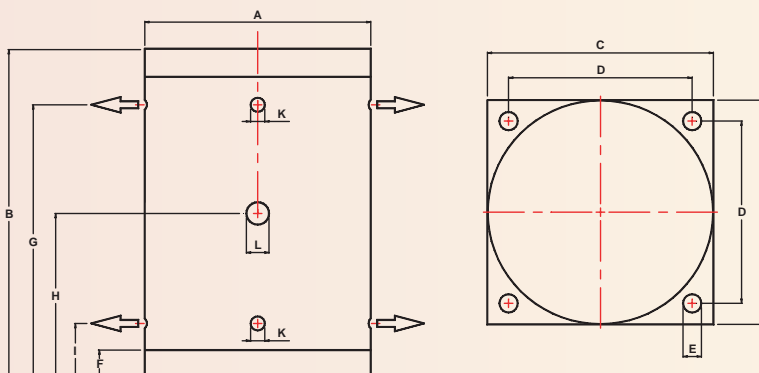
*Vibration Technology*

## Technical Data

Model	2 BAR - 30 PSI							
	Vibration	Linear Force			Working Moment		Air Consumption	
		VPM	N	Kg	Lb	Kg*cm	in*lb	L/min
PLV-75/01	2890	400	41	90	0.9	0.78	110	3.9
PLV-50/01	2280	450	46	101	1.6	1.38	108	3.8
PLV-54/02	1630	450	46	101	3.1	2.68	100	3.5
PLV-50/04	2000	1130	115	254	5.2	4.50	126	4.4
PLV-50/10	1800	2160	220	486	13.0	11.25	150	5.3
PLV-30/10	840	1940	198	436	50.0	43.25	280	9.8
PLV-50/20	1940	8050	821	1810	39.0	33.74	794	27.9
PLV-30/20	1200	5890	601	1324	75.0	64.88	1036	36.4
PLV-24/20	980	6870	701	1544	130.0	112.46	1038	36.4

Model	4 BAR - 60 PSI							
	Vibration	Linear Force			Working Moment		Air Consumption	
		VPM	N	Kg	Lb	Kg*cm	in*lb	L/min
PLV-75/01	3780	770	79	173	1.0	0.87	235	8.2
PLV-50/01	2736	750	76	169	1.8	1.56	225	7.9
PLV-54/02	2350	1210	123	272	4.0	3.47	300	10.5
PLV-50/04	2500	2390	244	537	7.0	6.07	282	9.9
PLV-50/10	2300	4930	503	1108	17.0	14.75	700	24.6
PLV-30/10	1044	4780	487	1075	80.0	69.42	730	25.6
PLV-50/20	2120	13730	1400	3087	56.0	48.59	1658	58.2
PLV-30/20	1300	12750	1300	2866	138.0	119.70	2246	78.8
PLV-24/20	1200	14700	1499	3305	186.0	161.40	2076	72.8

Model	6 BAR - 90 PSI							
	Vibration	Linear Force			Working Moment		Air Consumption	
		VPM	N	Kg	Lb	Kg*cm	in*lb	L/min
PLV-75/01	4450	1180	120	265	1.1	0.95	370	13.0
PLV-50/01	3260	1130	115	254	1.9	1.64	350	12.3
PLV-54/02	2760	2130	217	479	5.1	4.41	420	14.7
PLV-50/04	3000	3500	357	787	7.1	6.14	450	15.8
PLV-50/10	2850	8020	818	1803	18.0	15.57	940	33.0
PLV-30/10	1300	8900	908	2001	96.0	83.04	1060	37.2
PLV-50/20	2800	18640	1901	4190	43.0	37.20	2280	80.0
PLV-30/20	1750	19600	1999	4406	117.0	101.21	3110	109.1
PLV-24/20	1420	20600	2101	4631	186.0	160.90	3028	106.2



### Overall Dimensions

Model	A		B		C		D		E		F		G		H		I		K (No.)	L	Weight	
	mm	in	mm	in	mm	in	mm	in	mm	in	mm	in	mm	in	mm	in	mm	in			Kg	Lbs
	PLV-75/01	79	3.11	115	4.53	90	3.54	72	2.83	8.5	0.33	20	0.79	81	3.19	60.0	2.36	38			1.50	1/4" (2)
PLV-50/01	79	3.11	155	6.10	90	3.54	72	2.83	8.5	0.33	20	0.79	121	4.76	80.0	3.15	40	1.57	1/4" (2)	1/4"	2.9	6
PLV-54/02	100	3.94	156	6.14	110	4.33	90	3.54	9.0	0.35	19	0.75	111	4.37	77.5	3.05	44	1.73	3/8" (2)	3/8"	3.9	9
PLV-50/04	140	5.51	157	6.18	150	5.91	124	4.88	13.0	0.51	20	0.79	112	4.41	89.0	3.50	45	1.77	3/8" (2)	3/8"	15.9	35
PLV-50/10	190	7.48	157	6.18	200	7.87	165	6.50	17.0	0.67	20	0.79	110	4.33	79.0	3.11	45	1.77	3/8" (4)	1/2"	29.0	64
PLV-30/10	190	7.48	340	13.39	200	7.87	165	6.50	17.0	0.67	20	0.79	290	11.42	170.0	6.69	50	1.97	3/8" (4)	1/2"	66.0	146
PLV-50/20	250	9.84	190	7.48	250	9.84	210	8.27	21.0	0.83	30	1.18	134	5.28	95.0	3.74	57	2.24	3/8" (8)	3/4"	61.0	134
PLV-30/20	250	9.84	278	10.94	250	9.84	210	8.27	21.0	0.83	30	1.18	218	8.58	139.0	5.47	61	2.40	3/8" (8)	3/4"	91.0	201
PLV-24/20	250	9.84	360	14.17	250	9.84	210	8.27	21.0	0.83	30	1.18	298	11.73	180.0	7.09	62	2.44	3/8" (8)	3/4"	122.0	269



**DECA**  
**VIBRATOR**  
Division of DECA Products, Inc.

P.O. Box 1286 • Bridgeview, Illinois 60455-0286

(708) 974-9422 • Fax (708) 974-9429

1-866-384-3788

Website: [www.decavibrator.com](http://www.decavibrator.com) • Email: [sales@decavibrator.com](mailto:sales@decavibrator.com)

SPECIFICATIONS SUBJECT TO CHANGE