



DECA VIBRATOR

Division of DECA Products, Inc.

AIR AND HYDRAULIC VIBRATORS



WITH MORE THAN 30 YEARS OF EXPERIENCE

in the vibrator equipment industry, Deca Industries provides high performance, cost effective solutions to material flow problems. Deca's line of Air and Hydraulic Vibrators are compact and lightweight, can be mounted where flow or sticking problems occur.

DECA OFFERS HIGH PERFORMANCE

Constructed of high performance materials, Deca Air and Hydraulic Vibrators are designed to produce more force for size, weight and cost than any other air or hydraulic vibrator available. Offering durability and ruggedness, Deca Air and Hydraulic Vibrators effectively operate in extreme cold and heat as well as in dirt, dust and water.

WHEN MATERIAL REFUSES TO FLOW

from a bin or railcar; when products are not compacting or flowing properly in a form, mold or material handling system, use Deca Air and Hydraulic Vibrators. Quiet, efficient air and hydraulic vibrators create the forces necessary to move your material. Because they are air and hydraulic powered, speed can be adjusted, resulting in a wide range of force outputs. The use of air and hydraulic vibrators also protect from electrical hazards such as wet environments and wash downs.

OUR BUSINESS IS VIBRATORS

Ideal for a variety of industries, applications and materials. Deca Industries offers its products through a strong network of dealers and distributors. Providing expert technical assistance, an engineering department for special applications, and fast repair service, Deca Industries understands your vibrator needs.

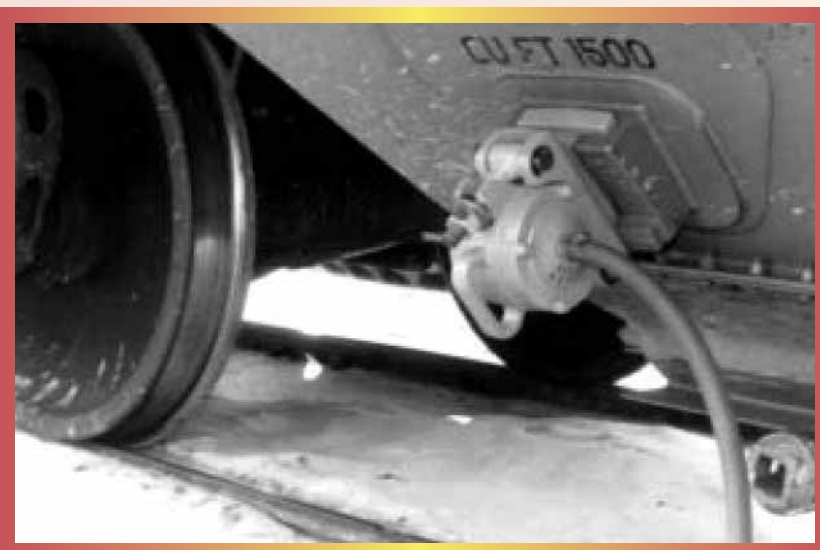
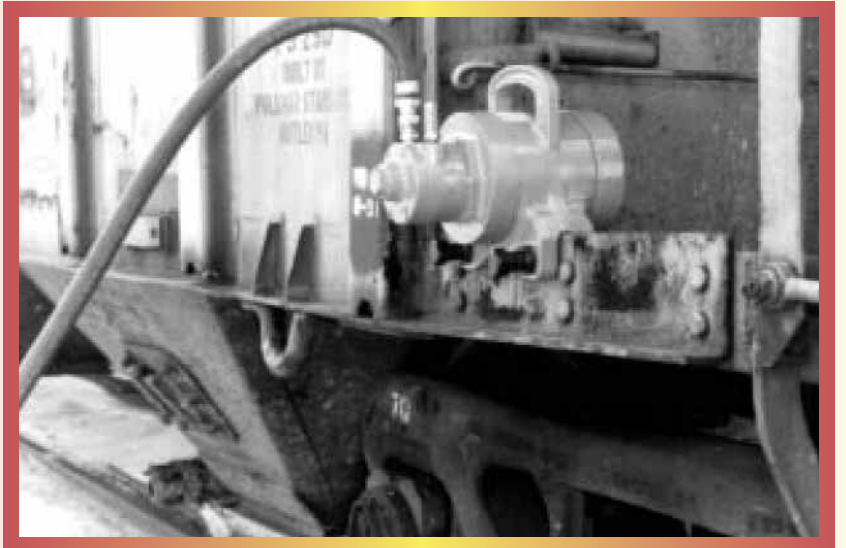
For more information and a list of Deca Industries dealers, please call (708) 974-9422.

FEATURES



Rail Cars
AC4-3000

Clamp On
AL4-3500



*Cradle
Mount
Wedge
Bracket*
AC11-5000

AIR VIBRATORS

PERFORMANCE

FORCE lb. (IN.LB.)³

MODEL*	MAX. RPM ¹	1	2	3	4	5	6	7	MAX PSI.	MAX CFM	dB ²
AA4-3300	4500	1150(2.0)	1350(2.4)	1650(2.9)	1950(3.4)	2250(3.9)	2550(4.4)	3300(5.8)	80	50	90
AC4-3000	4600	1550(2.6)	1800(3.0)	2150(3.6)	2400(4.0)	2750(4.6)	3000(5.0)		80	48.4	95
AC3-3500	3500	1800(5.2)	2100(6.0)	2500(7.2)	2800(8.1)	3200(9.2)	3500(10.1)		80	50	97
AL4-3000	4600	1550(2.6)	1800(3.0)	2150(3.6)	2400(4.0)	2750(4.6)	3000(5.0)		80	48.4	95
AL3-3500	3500	1800(5.2)	2100(6.0)	2500(7.2)	2800(8.1)	3200(9.2)	3500(10.1)		80	50	97
AA15-2600	15000							2697(.42)	80	41.3	94
AC15-2600	15000							2697(.42)	80	41.3	94
AC11-5000	11295							5000(1.4)	87	40	90
AC11-6500	11295							6500(1.8)	80	62	110

• Standard settings.

- 1) RPM varies with air flow
- 2) Sound produced in decibels - decibel reading taken with the vibrator mounted on a 400 lb. plate at a distance of 3 ft. from dB meter - A scale - slow response. (Caution: Above 85 dB use ear protection.)
- 3) Force outputs calculated at RPM listed, but a higher RPM may be acceptable if the vibrator weights are set on a lower setting. You may contact your dealer, or factory for the bearing life at higher speeds. (Note: for models AC3-3500 and AL3-3500, the RPM listed is the maximum RPM for all weight settings).

* AA4-3300, AA15-2600 has mounting bolts and compression washers included.
AA4-3300 has drilled and tapped hole for safety cable.

DIMENSIONS

Bolt Pattern

Bolt Size /QTY

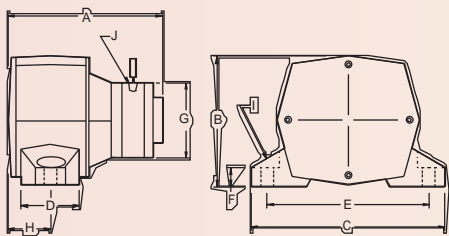
Ports⁴ npt

Weight/lb.

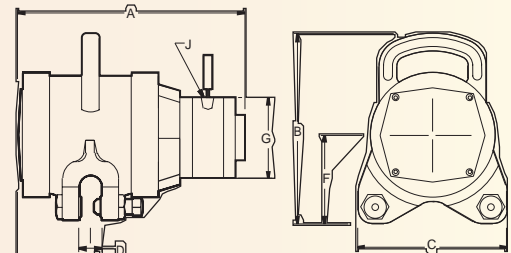
MODEL ⁵	A	B	C	D	E	F	G	H	I	J	Weight/lb.
AA4-3300	10 5/16"	6 5/8"	10"	3 1/2"	8"	1"	3 15/16"	3"	5/8"x1 3/4" / 2"	3/8"	44 lb.
AC4-3000	12"	10 5/16"	9 1/2"			3 7/8"	3 15/16"	4 1/16"		3/8"	47 lb.
AC3-3500	12"	10 5/16"	9 1/2"			3 7/8"	3 15/16"	4 1/16"		3/8"	50 lb.
AL4-3000	12"	10 1/2"	8 3/8"	1 1/4"		5"	3 15/16"	4 1/16"		3/8"	57 lb.
AL3-3500	12"	10 1/2"	8 3/8"	1 1/4"		5"	3 15/16"	4 1/16"		3/8"	63 lb.
AA15-2600	6 11/16"	4 7/8"	9"	3 7/8"	7"	1/2"			5/8"x 1" / 2"		23 lb.
AC15-2600	6 3/4"	4 13/16"	6 13/16"			2 5/8"		2 5/8"			17 lb.
AC11-5000	8"	9 1/16"	9 1/2"			3 15/16"	1 1/4"	3"			35 lb.
AC11-6500	8"	9 1/16"	9 1/2"			3 15/16"	1 1/4"	3"			35 lb.

4) Models AA15-2600, AC15-2600, AC11-5000 and AC11-6500 have 5/8" hose fitting included.

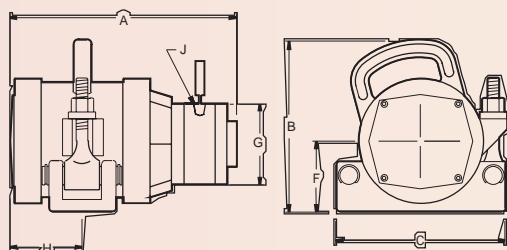
5) Cradle mount vibrator: AC4-3000, AC3-3500, AC11-5000, AC11-6500, and AC15-2600.



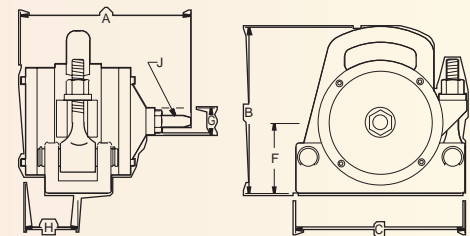
AA4-3300



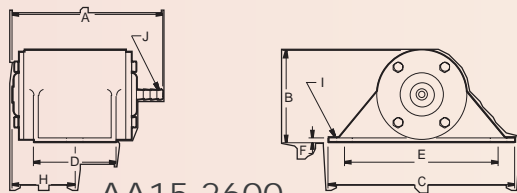
AL4-3000 AL3-3500



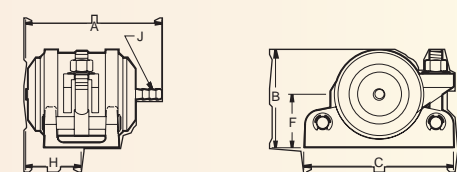
AC4-3000 AC3-3500



AC11-5000 AC11-6500



AA15-2600



AC15-2600

HYDRAULIC VIBRATORS

PERFORMANCE

FORCE lb. (IN.LB.)⁴

MODEL*	MAX. RPM ¹	1	2	3	4	5	6	7	MAX PSI.	MAX GPM ³	dB ²
H9-500	9000							500(.22)	1500	3.15	84
HA9-1600	9000	800(.35)	1100(.48)	1200(.52)	1400(.61)	1600(.69)			1500	3.15	88
HA4-3300	4500	1150(2.0)	1350(2.4)	1650(2.9)	1950(3.4)	2250(3.9)	2550(4.4)	3300(5.7)	1500	3.15	73
HC4-3000	4600	1550(2.6)	1800(3.0)	2150(3.6)	2400(4.0)	2750(4.6)	3000(5.0)		1500	6.43	76
HC3-3500	3500	1800(5.2)	2100(6.0)	2500(7.2)	2800(8.1)	3200(9.2)	3500(10.1)		1500	4.89	81
HL4-3000	4600	1550(2.6)	1800(3.0)	2150(3.6)	2400(4.0)	2750(4.6)	3000(5.0)		1500	6.43	76
HL3-3500	3500	1800(5.2)	2100(6.0)	2500(7.2)	2800(8.1)	3200(9.2)	3500(10.1)		1500	4.89	81

• Standard settings.

1) RPM varies with oil flow.

2) Sound produced in decibels - decibel reading taken with the vibrator mounted on a 400 lb. plate at a distance of 3 ft. from dB meter - A scale - slow response. (Caution: Above 85 dB use ear protection.)

3) Oil flow controls speed (RPM). The oil flow needed to maintain speed may vary with temperature and motor wear.

4) Force outputs calculated at RPM listed, but a higher RPM may be acceptable if the vibrator weights are set on a lower setting. You may contact your dealer, or factory for the bearing life at higher speeds. (Note: for models HC3-3500 and HL3-3500, the RPM listed is the maximum RPM for all weight settings).

* H-9-500, HA9-1600 and HA4-3300 has mounting bolts and compression washers included.

H-9-500, HA9-1600 and HA4-3300 has drilled and tapped hole for safety cable.

DIMENSIONS

Bolt Pattern

Bolt Size /QTY

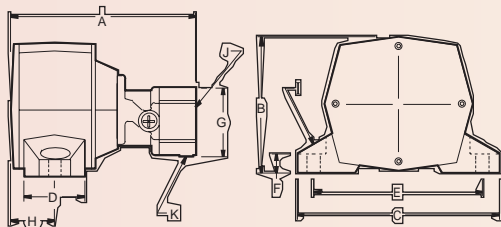
Ports npt

CASE DRAIN SAE

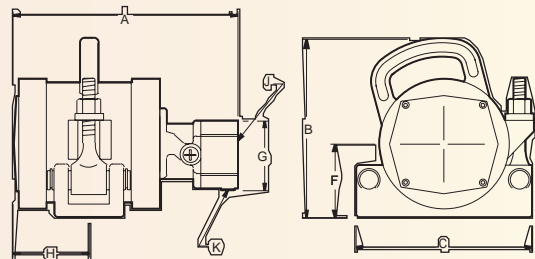
Weight/lb.

MODEL ⁵	A	B	C	D	E	F	G	H	I	J	K	
H9-500	6 1/4"	4 5/8"	6 3/4"	1 1/2"	5 1/2"	1"	2 3/4"	1 5/8"	3/8"x1 1/4" /2	3/8"	7/16"-20	11 lb.
HA9-1600	9 3/4"	4 4/8"	7 3/8"	2"	6"	1"	2 3/4"	2 3/8"	1/2"x1 1/2" /2	3/8"	7/16"-20	20 lb.
HA4-3300	10 1/2"	6 5/8"	10"	3 1/2"	8"	1"	2 3/4"	3"	5/8"x1 3/4" /2	3/8"	7/16"-20	41 lb.
HC4-3000	11 1/4"	10 5/16"	9 1/2"			3 7/8"	2 3/4"	4 1/16"		3/8"	7/16"-20	44 lb.
HC3-3500	11 1/4"	10 5/16"	9 1/2"			3 7/8"	2 3/4"	4 1/16"		3/8"	7/16"-20	47 lb.
HL4-3000	11 1/4"	10 1/2"	8 3/8"	1 1/4"		5"	2 3/4"	4 1/16"		3/8"	7/16"-20	54 lb.
HL3-3500	11 1/4"	10 1/2"	8 3/8"	1 1/4"		5"	2 3/4"	4 1/16"		3/8"	7/16"-20	60 lb.

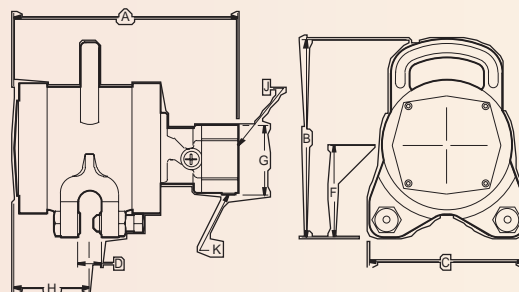
5) Cradle mount vibrator: HC4-3000 and HC3-3500.



H9-500 HA9-1600
HA4 3300



HC4-3000 HC3-3500



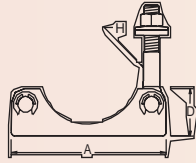
HL4-3000 HL3-3500

MOUNT BRACKETS

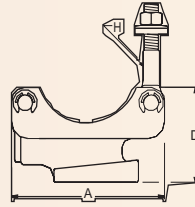
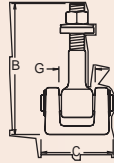
MODEL ¹	Part No.	A	B	C	D	E	F	G	H	I	Weight/lb.
WELD-ON BRACKET	221150	97/16"	55/8"	33/4"	27/16"			21/2"	7/8"		13 lb.
WELD-ON BRACKET*	221161	7 11/64"	8"	4"	23/4"			21/4"	7/8"		91/4 lb.
BOLT-ON BRACKET	221151	9 1/2"	8"	7"	23/4"	5 1/4"	7"	21/4"	7/8"	3/4"/4"	16 lb.
WEDGE BRACKET	221152	9 1/4"	103/4"	6 1/16"	5 1/2"			21/4"	7/8"		26 lb.
CLAMP-ON BRACKET	221153	97/16"	109/16"	57/8"	53/8"	1 1/4"		21/4"	7/8"		231/2 lb.

1) Brackets used on cradle mount vibrators (reference dimensional drawings).

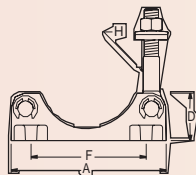
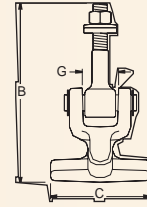
*Used on model AC15-2600 only



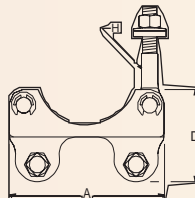
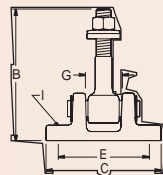
WELD-ON BRACKET



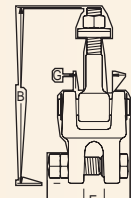
WEDGE BRACKET



BOLT-ON BRACKET

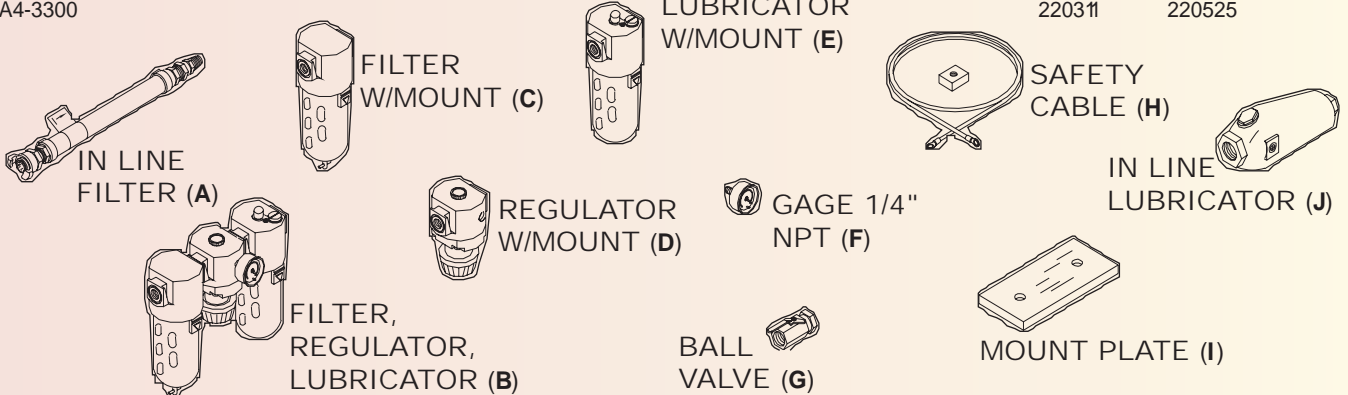


CLAMP-ON BRACKET



ACCESSORIES

MODEL	A	B	C	D	E	F	G	H	I	J
AA4-3300	607502	601041	601042	601043	601044	601026	606009	220311	220525	601049
AC4-3000	607502	601041	601042	601043	601044	601026	606009			601049
AC3-3500	607502	601041	601042	601043	601044	601026	606009			601049
AL4-3000	607502	601041	601042	601043	601044	601026	606009			601049
AL3-3500	607502	601041	601042	601043	601044	601026	606009			601049
AC11-5000	607503	601045	601046	601043	601047	601026	606009			601049
AC11-6500	607503	601045	601046	601043	601047	601026	606009			601049
AA15-2600	607503	601045	601046	601043	601047	601026	606009			601049
AC15-2600	607503	601045	601046	601043	601047	601026	606009			601049
H9-500								220300	220522	
HA9-1600								220311	220504	
HA4-3300								220311	220525	



WARRANTY

All Deca Industries, Inc. products are covered by a one year limited warranty. Ask for details.

AIR AND HYDRAULIC VIBRATORS



BALL VIBRATORS

Compact, lightweight, can be used virtually anywhere



AIR VIBRATORS

Hardworking-Tough-Dependable
Permanent or quick change base



ELECTRIC VIBRATORS

The highest quality Electric
Vibrator you can buy



HYDRAULIC VIBRATORS

Powerful-Quiet-Efficient
Adjustable weights and frequency



TRUCK VIBRATORS

Dump wet, sticky, and frozen material
12 and 24 volt; "The Original"



DECA
VIBRATOR

Division of DECA Products, Inc.

P.O. Box 1286 • Bridgeview, Illinois 60455-0286

(708) 974-9422 • Fax (708) 974-9429

Website: www.decavibrator.com • Email: sales@decavibrator.com

SPECIFICATIONS SUBJECT TO CHANGE

COPYRIGHT ©2005 DECA PRODUCTS, INC.