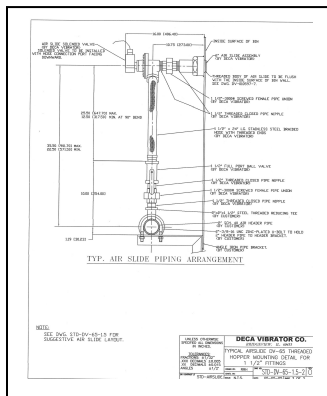


DECA AIR-SLIDES

NEEDS ASSESSMENT WORKSHEET

Use this form as an **RFP** (Request for Proposal), to solve your toughest material flow problems. We stand by our Deca Air-Slide solutions. Our engineering skills, combined with the quality of our Air-Slides, deliver unbeatable value.

Tell us your needs by completing this worksheet. Prefer a phone consultation before getting started? Call us toll-free at **(866) 384-3788** (Central Time Zone). Our expert staff will respond with a **no obligation Engineering Proposal**.



Prefer to complete and submit the worksheet *online*?

- Click "back" to open an *online* worksheet, or type-in/paste-in this URL: www.DecaVibrator.com/air-slides_worksheet.html. Fill out and submit your worksheet online, then email your drawings or other supporting documents (showing your company name) to sales@DecaVibrator.com.

Prefer to complete and submit the worksheet in *hard copy*? Print this out, and fill it in by typewriter or hand.

- Fax** the worksheet, plus labeled drawings and other supporting documents, to our **office FAX number (708) 974-9429, ATTENTION: SALES OR**
- Mail** the worksheet, with any drawings or supporting documents, to our office address— **ATTENTION: SALES, Deca Products Inc., P.O. Box 1286, Bridgeview, IL 60455-0286,**

Questions about what's on the worksheet? Prefer a phone consultation? Call us toll-free at **(866) 384-3788** (Central Time Zone). We're anxious to help.

Use "**Resources**" (see Home Page, left column) for assistance in filling out this Worksheet.

All information submitted to Deca on this worksheet will be treated confidentially.

1. DESCRIPTION OF MATERIAL IN BIN

- A) MATERIAL
- B) MOISTURE CONTENT
- C) RANGE OF PARTICLE SIZE: MINIMUM IN. OR MESH
MAXIMUM IN. OR MESH
PERCENT UNDER 60 MESH % UNDER 200 MESH %
- D) MATERIAL TEMPERATURE (MAX) DEGREES FAHRENHEIT
- E) **BULK DENSITY** LBS / FT³ (for help, check "**Resources**" at www.DecaVibrator.com)
- F) **SPECIAL CHARACTERISTICS**

2. DESCRIPTION OF BIN—(Please submit simple drawing. Label with company name.)

- A) CAPACITY TONS OR FT³
- B) BIN WALL MATERIAL
- C) BIN WALL THICKNESS
- D) SIZE OF DISCHARGE OPENING
- E) SLOPE OF BIN WALL DEGREES FROM HORIZONTAL
- F) TYPE OF GATE
- G) NUMBER OF BINS OF THIS TYPE

3. FLOW OF MATERIAL

- A) LEVEL OF MATERIAL IS TO FEET ABOVE OPENING.
- B) BIN IS FILLED BY: (Check one per row.)
- CONVEYOR FEEDER BUCKET
- AND DISCHARGES ONTO:
- CONVEYOR FEEDER TRUCK
- REQUIRED FLOW FROM BIN IS:
- CONTINUOUS INTERMITTENT
- C) REQUIRED RATE OF FLOW IS TPH

4. FUNCTION OF CONTROL BOX

- A) WILL REMOTE CONTROL BE USED YES NO
- B) WILL MANUAL OVERRIDE BE NEEDED YES NO
- C) IS 110 VOLT—60 HZ AVAILABLE YES NO
- D) PLEASE SPECIFY ANY SPECIAL FEATURES REQUIRED

5. GENERAL

A) HAVE ELECTRIC OR PNEUMATIC VIBRATORS BEEN TRIED? YES NO

IF YES, SPECIFY 1. NAME

2. TYPE

3. MODEL NO.

B) AIR SUPPLY AVAILABLE AT BIN PSI AND CFM

C) PIPE SIZE DIA

D) WILL THIS BE: A PILOT INSTALLATION A FULL SYSTEM INSTALLATION

6. PLEASE SUMMARIZE THE PROBLEM THAT NEEDS TO BE SOLVED.

7. WHICH BEST DESCRIBES YOUR BUSINESS? (Select One.)

- ASPHALT PLANT
- CONCRETE PLANT
- POWER PLANT
- FOOD/PHARMACEUTICAL PLANT
- SAND GRAVEL PIT
- FOUNDRY
- CHEMICAL PLANT
- OTHER (specify)

8. CORPORATE INFORMATION

*Note: The asterisk * indicates required information.*

*Company Name Parent Company

*Address #1 Address #2

*City *State/Province *Postal Code *Country

9. CONTACT INFORMATION

Title *First Name MI *Last Name Suffix

*Job Title

* E-mail Address

* Direct Phone Cell Phone

Fax Number

10. Contact Me Via: Email Direct Phone Fax Cell Phone

Before submitting, **please check for skipped questions.** Under **Resources** (on each page of the website, in the salmon-colored Navigation Bar on the left-hand side), we feature some bulk density reference tables to help you. We're also happy to interpret questions or coach you on compiling answers. Just give us a **call at (866) 384-3788 (toll-free).**

- Send any drawings, typed/written answers and supporting documents (label with company name):
 - **EMAIL:** sales@DecaVibrator.com
 - OR**
 - **FAX: (708) 974-9429**
ATTENTION: SALES
 - OR**
 - **MAIL: ATTENTION: SALES, Deca Products Inc., P.O. Box 1286, Bridgeview, IL 60455-0286**

THANK YOU