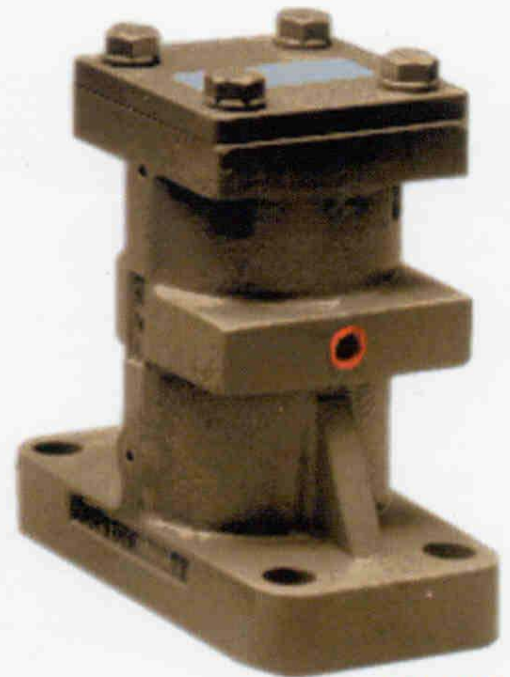


BV & HCV Pneumatic Piston Vibrators



HCV 350



BV 425



BV 112



BV 150



BV 225

Dimensional Data – Piston Vibrators

MODEL NUMBER	ALL DIMENSIONS IN INCHES								
	A	B	C	D	Mounting E Centers	F	G	NPT Inlet	WT
BV-112	3¾"	4½"	2"	½"	3½"	1"	½"	¼"	4
BV-150	5½"	6"	2½"	¾"	4½"	1¼"	½"	¼"	9
BV-175 BV-225	7¼"	9"	3½"	1"	7½"	1¾"	⅝"	¼"	21
BV-312 BV-350	9⅝"	9½"	5"	1½"	7¾"	3¼"	⅞"	⅜"	53
BV-425	12"	14"	6"	1½"	12"	4"	1"	½"	98
BV-650	20"	14"	10"	2"	11"	7"	1½"	½"	390
HCV-312 HCV-350	14½"	8"	6"	8"	5⅝"	6⅞"	⅞"	⅜"	75

Bulk Material Flow Control

- **Low Initial Cost**
- **Piston Actions**—All Models Available in either Impact or Air-Cushion
- **Tef-Kote**—Lubricated Units Available
- **Virtually Maintenance Free**—When Used with Filtered, Lubricated Air Supply
- **Heavy Ductile Iron Casting** and Ground Chrome Plated Piston
- **Complete Control**—Over Force, Amplitude and Frequency with Use of Pressure Regulator

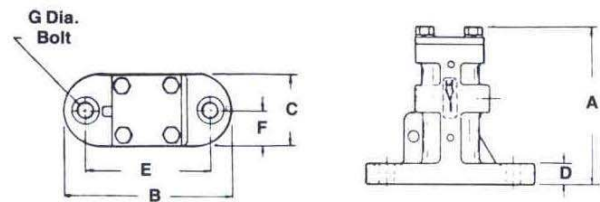
Accessories

- | | | |
|------------------------|----------------------------|-----------------------------|
| 1. Lubro-Control Units | 6. Springs | 11. ACT-60 Electronic Timer |
| 2. Regulator | 7. Lever Valve | 12. PAT-15 Pneumatic Timer |
| 3. Lubricator | 8. Self Closing Valve | 13. Mounting Plates |
| 4. Filter | 9. Solenoid (120/240 Volt) | a. Channel |
| 5. Hose | 10. Mufflers (Steel) | b. Flat Mount |

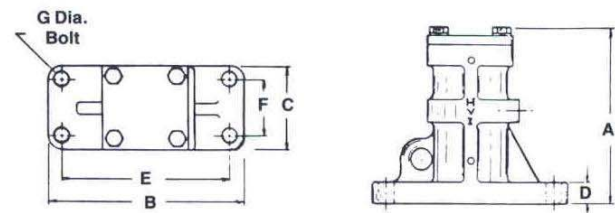
Industries Served

- | | | | |
|---|------------------------------|------------------------------|---------------------------|
| • Asbestos Producers | • Coal Yards | • Inks | • Powdered Milk Producers |
| • Asphalt Plants | • Coffee Manufacturers | • Lead Product Manufacturers | • Polish Manufacturers |
| • Bakery Products | • Concrete Products | • Lumber and Wood Products | • Porcelain |
| • Battery Manufacturers | • Confectionery Products | • Mining | • Power Plants |
| • Breweries and Distilleries | • Cotton Seed Meal Producers | • Paints and Allied Products | • Precast Concrete |
| • Canning and Preserving Fruits, Vegetables | • Crushed Stone | • Paper and Allied Products | • Pulp Mills |
| • Chemicals and Allied Products | • Flour Mills | • Petroleum Refining | • Railroads |
| • Clay Refractory Manufacturers | • Foundries | • Pharmaceutical | • Steel Mills |
| | • Glass Manufacturers | • Plastic Materials | • Sugar Refineries |
| | • Grain Mill Products | | |

Models – BV-112, BV-150, BV-175 and BV-225



Models – BV-312, BV-350 and BV-425



Models – HCV-312 and HCV-350

